



EX-007 User Manual

ISSUE A - JANUARY 2010

Contents

1.1 Overview	3
1.2 Connections	3
1.3 Viewing the Master Screen	4
1.4 Network Setup	4
1.5 Mirroring Mode	6
1.6 Worksurface Layout	6

Copyright © 2010 Digico (UK) Ltd

All rights reserved.

No part of this publication may be reproduced, transmitted, transcribed, stored in a retrieval system, or translated into any language in any form by any means without the written permission of Digico UK Ltd. Information in this manual is subject to change without notice, and does not represent a commitment on the part of the vendor. Digico UK Ltd shall not be liable for any loss or damage whatsoever arising from the use of information or any error contained in this manual.

All repair and service of the SD-7 product should be undertaken by Digico UK Ltd or its authorised agents. Digico UK Ltd cannot accept any liability whatsoever for any loss or damage caused by service, maintenance, or repair by unauthorised personnel.

Digico (UK) Ltd

Unit 10

Silverglade Business Park

Leatherhead Road

Chessington, Surrey

KT9 2QL

England

Telephone: +44 (0)1372 845600

Fax: +44 (0)1372 845656

Email: sales@digiconsoles.com

WWW: http://www.digiconsoles.com

All trademarks are acknowledged as the property of their respective owners

Manual Issue: Issue A, January 2010

Electrical Safety Warning

Unlike most large conventional analogue consoles, the SD7 worksurface contains its own mains power supply, and a variety of internal supply units and converters. These are fully insulated and covered to meet the relevant electrical safety standards, but technicians working within the console should be aware of the presence of **mains voltage**.

Note also the rack PSU if operated removed from the chassis has heatsinks exposed that are live to **mains voltage**.

Also, SD7 contains a number of back-lit flat screen displays. The illumination system of these displays uses line voltages of up to several KV, generated by high frequency DC - DC converters located close to the displays. Touching or tampering with these circuits will put a technician at risk of very damaging RF burns to the skin and/or **high voltage electric shock**.



1.1 Overview

These instructions must be read in conjunction with the current SD-7 User Manual and Mach2 Upgrade Appendix.

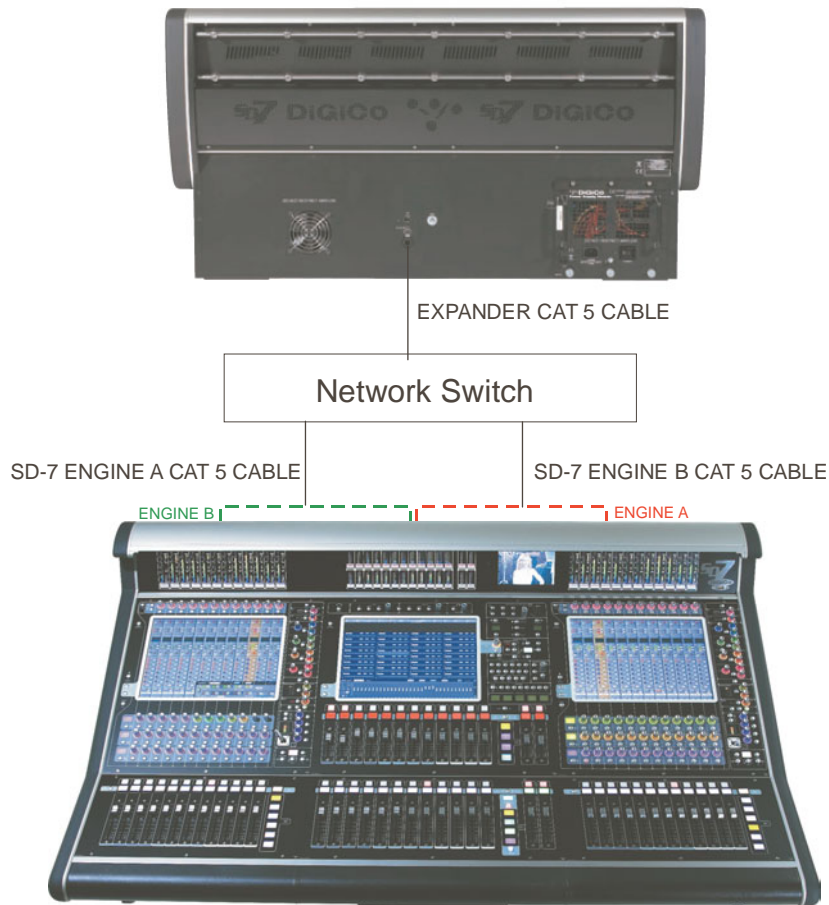
The EX-007 provides worksurface expansion for the DiGiCo SD-7 console.

It consists of two, twelve fader channel sections that have all the same functionality as the left and right channel sections of the SD-7 worksurface. The EX-007 is a networked device that provides control of user defined channels on the SD-7 itself - it does not have any audio connections or DSP built in.

1.2 Connections

Connecting the EX-007 requires a Network switch and standard (not crossover) Cat5 cables for each of the devices on the network. A system can consist of one SD-7 with two engines and either one or two expanders. Please ensure that you use a good quality network switch (Minimum 10/100Mbs) to ensure correct operation.

All connections should be made before switching on the console and racks.

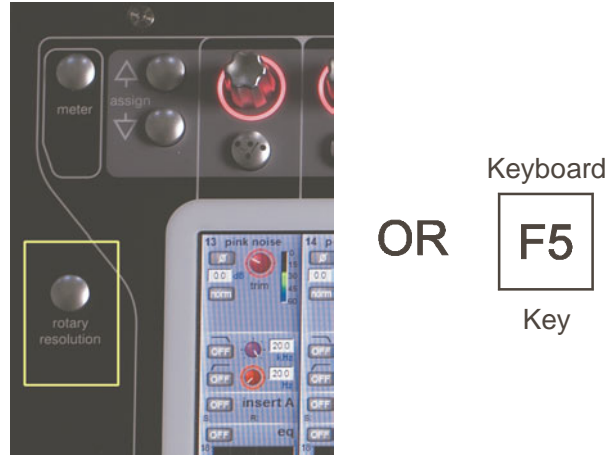


1.3 Viewing the Master Screen.....

When setting up the network between the SD-7 and EX-007, it is useful to be able to view the Master Screen on the EX-007. To do this, press either the left section Rotary Resolution button or the keyboard F5 key. Pressing either of these buttons again will return the screen to a Channel view. Moving a Channel control or Assignable rotary will also return the screen to a channel view.

To view Master Screen on EX007

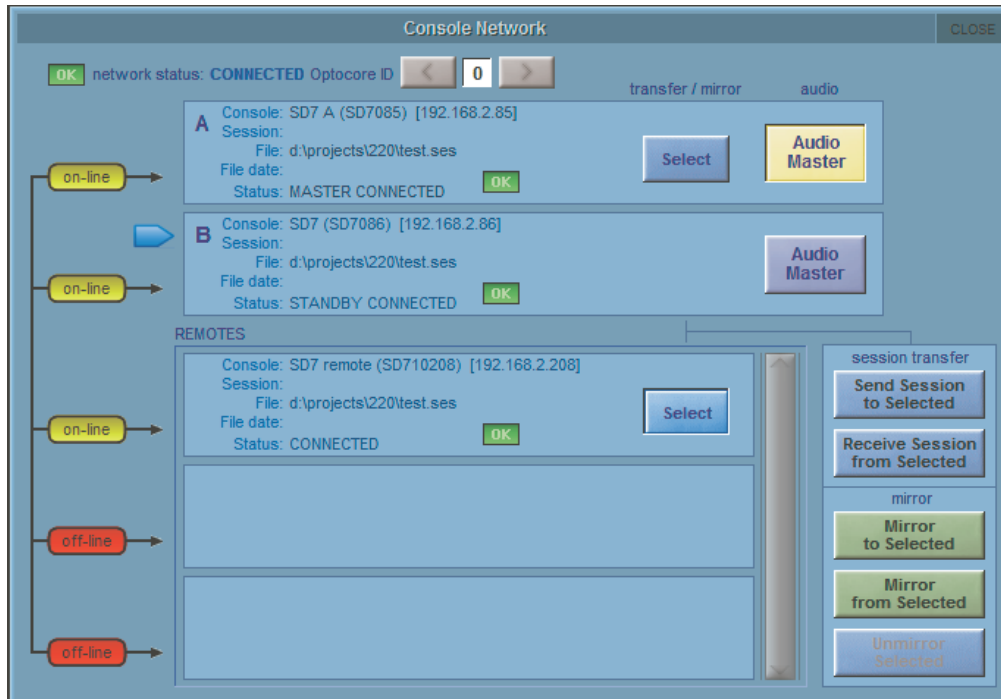
Press Left Input section Rotary Resolution button



1.4 Network Setup

When the system is correctly connected and the application is running, open the Master screen / Network Panel and you should see the following details. The picture below shows the SD-7 A Engine which is Online to the SD-7 B Engine and a Remote Control unit which in this case is an EX-007.

All devices in the system (Both SD-7 engines and the EX-007) must be "synced" and mirrored in the standard way.

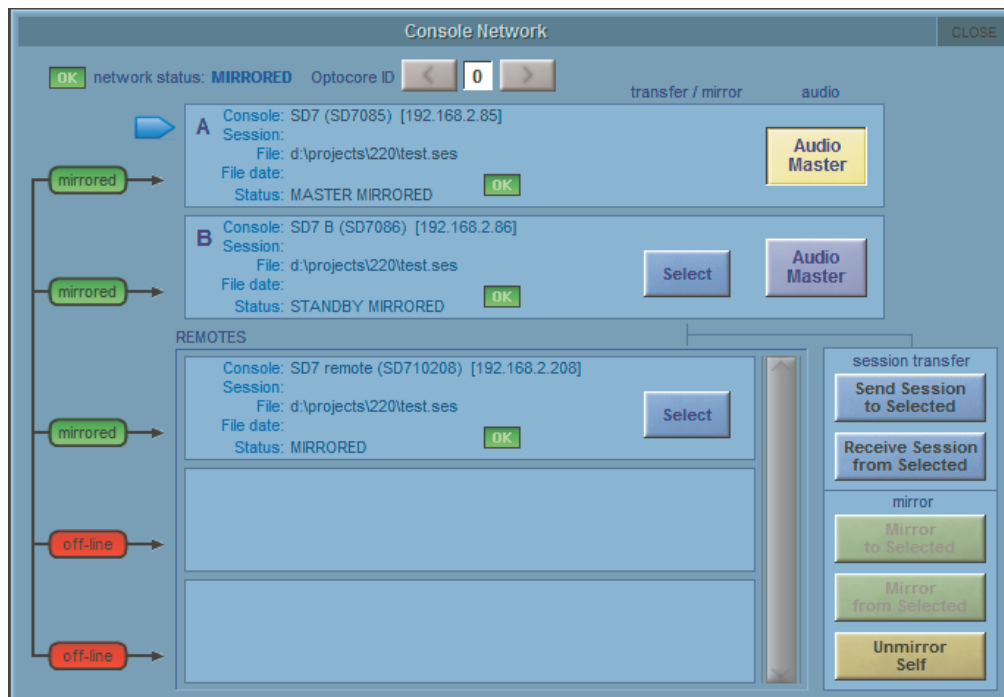


NOTE: Please ensure that Options/Session Tab/Enable Console Network is set to YES on all devices before proceeding.



- 1) Load the required session on the SD-7 Engine A
- 2) Press the **Select** button in the **Network** panel for SD-7 Engine B
- 3) Press the **Send Session To Selected** button to transfer the session to SD-7 Engine B and wait for the process to complete
- 4) Press the **Select** button in the **Network** panel for EX-007 in the **Remotes** section of the **Network** panel
- 5) Press the **Send Session To Selected** button to transfer the session to the EX-007 and wait for the process to complete
- 6) Press the **Select** button in the **Network** panel for SD-7 Engine B
- 7) Press the **Mirror To Selected** button to mirror to SD-7 Engine B
- 8) Press the **Select** button in the **Network** panel for EX-007 in the **Remotes** section of the **Network** panel
- 9) Press the **Mirror To Selected** button to mirror to the EX-007

The Network panel should now look like this:

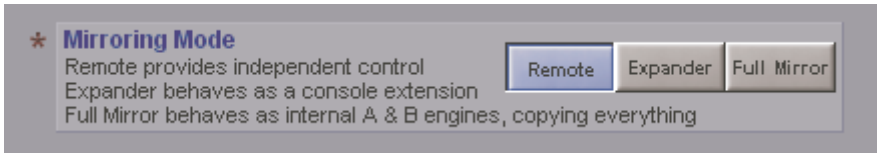


To Unmirror any device, press the Select button for the required device and then press the **Unmirror Selected** button. If no devices are selected then the **Unmirror Selected** button can be used to Unmirror the device that you are using (**Unmirror Self**)

NOTE: On the EX-007, because it does not have its own Audio Engine, the Audio Mastership buttons act as Mirrored controls for the SD-7's own Engine A & B Audio Mastership buttons.

1.5 Mirroring Mode

Mirrored devices may operate in one of 3 different modes which are set in the Master screen / Options / Session tab.



Mirroring Modes are:

- 1) Full Mirror - normally used between two SD-7 engines where all functions are mirrored to ensure that the two sessions remain in complete sync.
- 2) Expander - used when the EX-007 is considered to be part of the console and requires all the same options to be set. The difference between Full Mirror and Expander modes is that in Expander mode the selection of banks and layers is not Mirrored and therefore different channels can be viewed independently on the two devices.
- 3) Remote - used when the EX-007 is considered to be a separate unit that is used as an additional worksurface possibly operated by a second person. In this situation all options can be set independently and banks and layers can also be viewed independently on the two devices.

1.6 Worksurface Layout

When the SD7 and the EX-007 have been synced and mirrored they will both have the same worksurface layout but normally you will wish to view different banks on the two devices. All banks are available on both devices in the same way so the general layout should be considered carefully.

As a starting point we would suggest that the EX-007 is set to view Layer 3 and the banks that are required on the EX-007 are assigned to Layer 3 using the **Fader Banks** panel in the **Layout** menu using either the **Copy To** or **Move** functions.

Touch the relevant on screen bank button, touch either **Move** or **Copy To** button and then touch the relevant destination bank in Layer 3. In the picture below, you will see the result of moving banks containing CH 25-36 and CH 37-48 to left and right hand banks of Layer 3. These could then be viewed on th EX-007.

